



syngenta

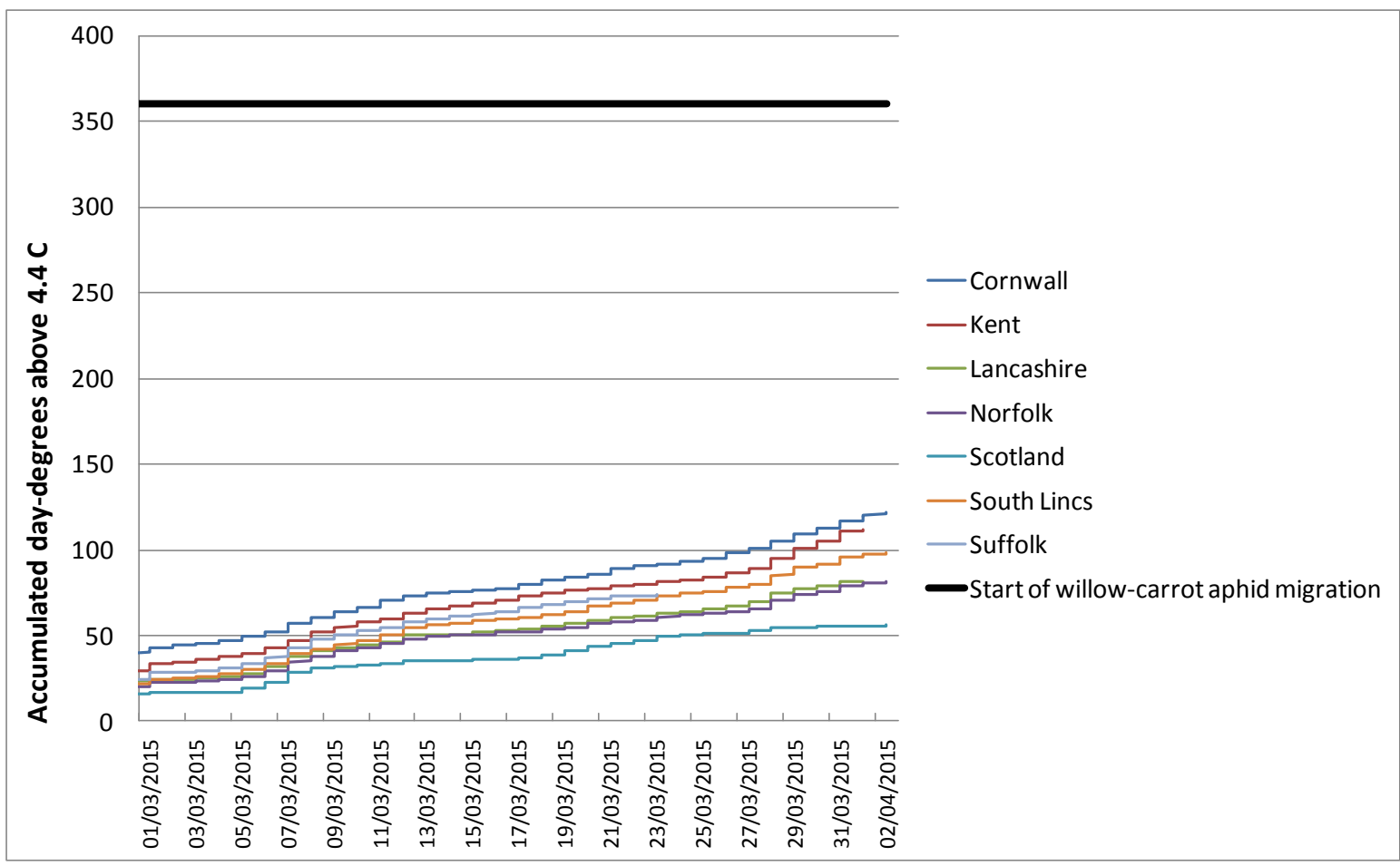
WILLOW-CARROT APHID

In partnership with   

Willow-carrot aphid forecast – 3 April 2015

The graph below shows a 'day-degree forecast' for willow-carrot aphid (*Cavariella aegopodii*). The forecast is based on accumulated day-degrees (D°) from 1 February (base 4.4°C). Information from the Rothamsted Suction trap captures at Wellesbourne and Kirton has been used to estimate the mean number of D° from 1 February until the first aphid of the year is caught in a suction trap (the start of the migration to carrot). This is after approximately 360D°.

Weather data provided by Plantsystems Limited.



You can find further information on willow-carrot aphid here:

<http://www.rothamsted.ac.uk/insect-survey-resources/aphid-species>